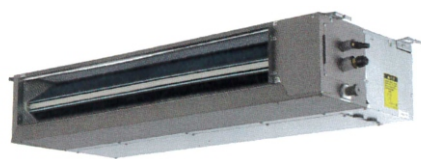
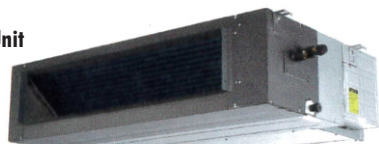


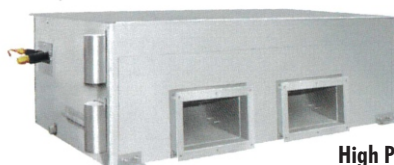
Ducted Unit



Low Pressure Ducted Unit



Medium Pressure Ducted Unit



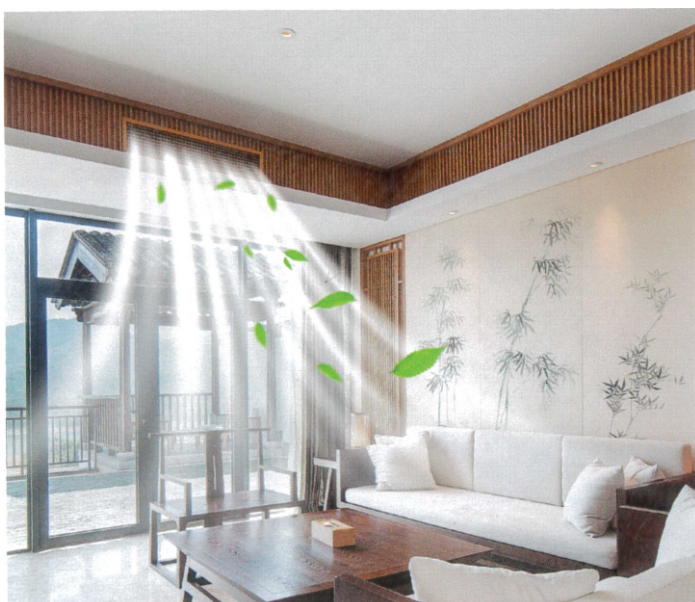
High Pressure Ducted Unit

MEKER combines a number of patented technologies to completely upgrade the structure, performance and function of the air duct machine.

It adopts thin body design, invisible installation, and the effect is more beautiful. It can realize smart health functions such as smart phone remote control, UVC ultraviolet sterilization, and fresh air introduction, creating a comfortable environment for homes and offices and bringing a healthy and high-quality life.

According to the different static pressure of the unit, there are low static pressure air duct machines (0-30Pa) and medium static pressure air duct machines (10-80Pa).

Not only powerful, fast cooling and heating, but also long-distance air supply. It can be widely used in shopping malls, restaurants, supermarkets, conference rooms and other commercial and office places.



High-efficiency Low-noise Compressor

- » Equipped with high-efficiency rotary compressor, compared with models with scroll compressors, the power is stronger, cooling and heating performance is faster, anti-fading ability is higher.
- » Easy to deal with high temperature in cooling mode and low temperature in heating mode.
- » The running parts of the compressor wear less, run smoothly, with low noise and long service life.
- » The inverter model adopts high-efficiency DC inverter compressor, When starting up, it runs at high speed, strong output, and one step faster in heating and cooling; When normal running, accurate output, reducing indoor temperature fluctuations, comfort and power saving.



- Powerful
- Quiet
- Efficiency



Inner Threaded Copper Tube

- » The internal threaded copper tube effectively improves the heat exchange effect by increasing the inner surface area of the tube and enhancing the disturbance.
- » Destroy the boundary layer of refrigerant flow, increase disturbance and improve heat exchange efficiency.
- » The heat transfer coefficient is higher and the energy saving effect is better.

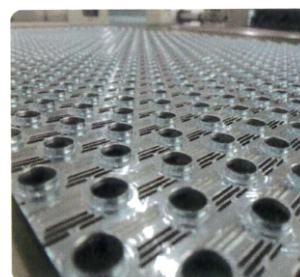


The inner threaded pipe destroys the boundary layer of the refrigerant flow and enhances the disturbance, thereby enhancing the heat exchange.



Hydrophilic Aluminum Foil

- » The new hydrophilic aluminum foil has the ability of degreasing and anti-fouling, which can make the condensed water generated during the operation of the air conditioner flow away along the fins as soon as possible. When defrosting, the defrosting time can be greatly shortened, and the heating efficiency is higher.



Degreasing and antifouling hydrophilic aluminum foil fins

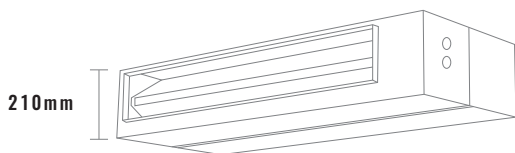
- Fin
- Water drop
- $\theta > 90^\circ$
- Water drops between fins are not easy to stick
- Water drops will run off the fin's surface

Ducted Unit



Ultra-thin Body, Convenient To Install

- »» The thickness of the unit is only 210mm, which does not take up too much ceiling space, saves indoor space and improves indoor aesthetics.



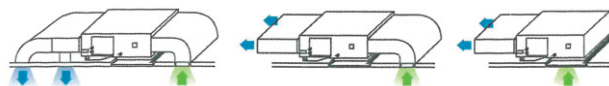
Access Control And Fire Alarm Connection

- »» The indoor unit is equipped with a functional interface, which can be linked with the room card and connected to the fire protection system to realize automatic shutdown and safer use.



Multi-stage Static Pressure

- »» Multi-stage static pressure is optional, and the installation is flexible and more convenient. According to different spatial structures, direct blowing or connecting air ducts can be selected to meet individual needs.



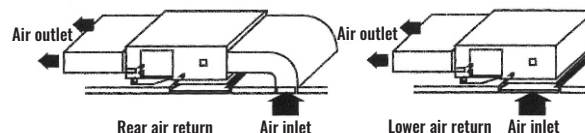
WIFI Control Function (Optional)

- »» Optional WIFI remote control module can be chosen, through the mobile phone to remotely control the air conditioner.



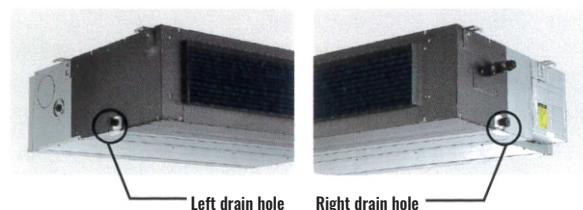
Adjustable Air Return Method

- »» During installation, it can be installed according to the needs of the site, just by changing the position of the return air baffle, the lower air return and the rear air return can be realized. The application is flexible and the installation is easy. (Rear air return is factory default installed)



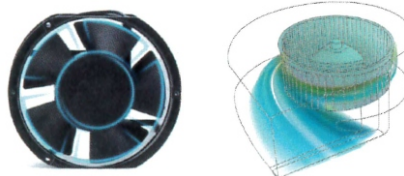
Drainage On Both Sides

- »» The unit reserves two drainage ports on the left and right, and the on-site installation can be flexibly selected according to actual needs, and the arrangement of the drainage pipes is more free and convenient.



High-efficiency Low Noise Motor

- »» The indoor unit adopts a high-efficiency fan motor, a newly designed centrifugal fan and a new volute air duct system. Make the unit run smoothly, air supply is soft, and noise is lower.



UVC Sterilization Function (Optional)

- »» UVC powerful sterilization accessories can be customized to effectively kill Escherichia coli, Corynebacterium diphtheria, Mycobacterium tuberculosis, Salmonella, etc. The process is non-toxic, no residue, no peculiar smell, and protects human health.

